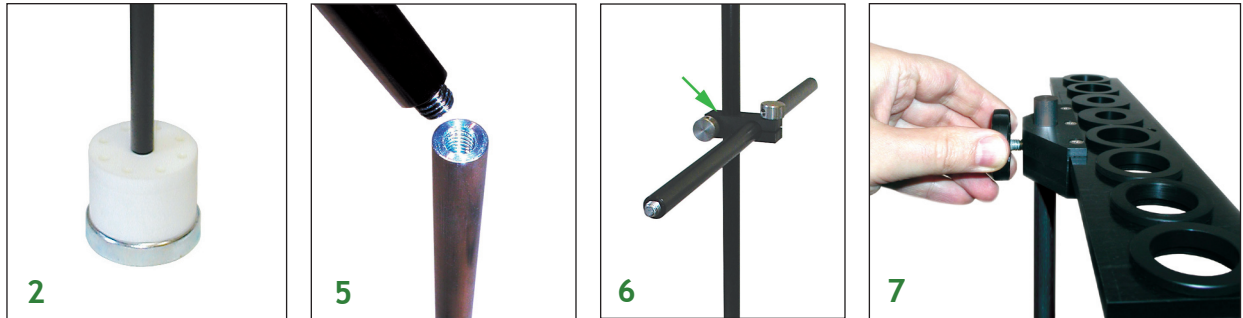
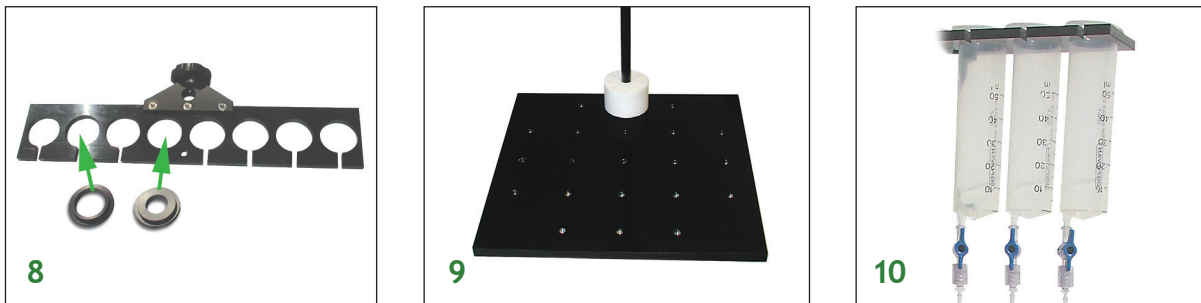


# Syringe Holder, SH-1A

1. SH-1A Syringe Holder comes with a 1x1' vibration isolation stand, magnetic base, three ½" O.D. 1' feet long rods, plastic syringe holder for 50-60ml syringes, 16 syringe adapters for 5-10 ml (x8) and 30-35 ml (x8) syringes, eight syringes, Tygon tubing, stop-cocks, and luer-barb fitting.
2. If using a magnetic base, position the base on top of a magnetic surface.
3. The stand can be directly attached to threaded surfaces using provided M8 screws.
4. Screw 1' rod into magnetic base.
5. Screw another rod to the top of the previous rod. Repeat if extra height is required. Syringe holder can be extended up to three feet high by attaching the rods to each other.
6. If a perfusion system is used, put provided x-blocks on the rod, before attaching the next rod on top.
7. Fix the syringe holder on the top post.



8. Insert syringes into the holder. If smaller volume syringes are used, insert syringes into ring adapters first.
9. The rods can be attached directly to the provided 1x1' stand.



10. Attach stop-cocks to the syringes. Connect TYGON tubing to the barb of luer connector and attach to stop-cock.
11. Connect different tubing using ferrule type and luer adapters: Both Tygon and polyethylene tubing can be connected to the syringes. Soft Tygon tubing fits to provided barbed luer connectors, which lock into the syringes. Polyethylene tubing needs to be attached to ferrule type luer lock adapter first. Micro-bore tubing can be also connected to either syringes directly or to Tygon and polyethylene tubing using provided ferrule type adapters. Note: microbore tubing requires sleeves. Ferrule-based fitting is included with complete perfusion systems, or in optional PS-KIT kit.

