

FLEXCELL® FX-5000™ Tension System

(cat. no. FX-5000T)

Labortechnik

Apply equibiaxial or uniaxial tension to cells in 2D or 3D culture.

- Computer-regulated bioreactor that applies cyclic or static tensile strains to cells cultured *in vitro*.
- Uses regulated vacuum pressure to deform flexible-bottomed culture plates producing up to 33 % substrate elongation.
- Simulate *in vivo* tissue strains and frequencies in cells from muscle, lung, heart, blood vessels, skin, tendon, ligament, cartilage, and bone.
- Contains state-of-the-art digital valve to automatically regulate and maintain pressure to provide the specified strain regimen.
- Works with BioFlex, TissueTrain, UniFlex series culture plates.
- Multiple frequency, amplitude and waveform changes can be programmed in one regimen (Fig. 3).
- Uses cylindrical or Arctangle Loading Posts to provide equibiaxial or uniaxial strain, respectively.
- Apply gradient biaxial strain (unconstrained distention) by removing Loading Stations.
- Drives up to four independent FlexLink remote compression and/or tension controllers.
- Better control of waveforms at low and high amplitudes.

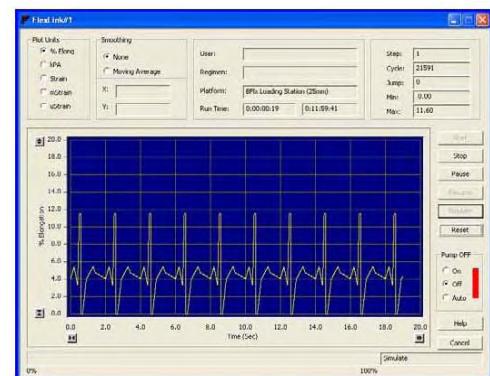


Figure 3. Waveform plot showing typical heart waveform.

Waveforms available:

- Static
- Sinusoidal
- Heart Stimulation
- Triangular
- Square
- Custom

FX-5000 Tension System includes:

- Host computer with 17" flat panel monitor
- FlexSoft FX-5000 software
- FX5K™ Tension FlexLink
- Tension accessory package:
 - BioFlex Baseplate and four gaskets
 - BioFlex Loading Stations with 25 mm diameter Loading Posts
 - Four BioFlex culture plates
 - Drying filter, water trap, vacuum tubing, and grease/lubricant

